

N° :

Date : 7 sept. 2017

Induction motor

2P FLSD 160MB 15kW LS2/IE2 Ex II2G Ex d IIB T4 Gb 400VD/690VY 50Hz B3 -

Utilisation : Environment ATEX standard - Gas ; Ambiance Corrosive ; Finition - ; Zone Explosion Proof - Gas ; Type of protection Ex II2G Ex d IIB T4 Gb ; General applications ; Ambient temperature -20 +40 °C ; Maximum altitude 1000 m ; Maximum surface temperature 135°C

Motor characteristics : Cast iron housing ; Cast iron DE endshield ; Cast iron NDE endshield.



Motor definition

Motor definition		Motor definition	
Protection type	Ex II2G Ex d IIB T4 Gb	Application	General applications
Generation code	LS2	Main voltage (V)	400
Efficiency class	IE2	Connection	DY
Number of network phases	3	Motor winding (V)	400VD/690VY
Number of speed		Rated Frequency (Hz)	50
Polarity	2P	Operation position	IM1001(IMB3)
Motor serie	FLSD	Index of protection	IP55
Frame size (mm)	160	Index of cooling	IC411
Lenght code	MB	Insulation class	F
HS rated power (kW)	15.000	Finish	-
LS rated power (kW)	-	Moment of inertia J (kg.m2)	0.0490000
Rated speed (min-1)	2937	Motor weight (kg)	186.0
Maximum mechanical speed (min-1)			

Common definitions

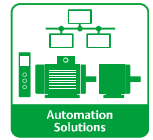
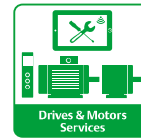
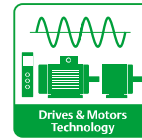
Paint shade	RAL2004
Paint system	Ila (1 epoxy base coat 30/40 microns + 1 polyurethane finish coat 20/30 microns)

Motor mechanical interface

Mounting flange	-	Shaft material type	Steel shaft
Drive end shaft type	IEC STANDARD shaft end	Nuance of shaft material	-
Diameter DE shaft (mm)	42k6	Second shaft extension	-
Length DE shaft (mm)	110	Diameter NDE shaft (mm)	-
DE bearing mounting	Locked	Second shaft end length (mm)	-
DE bearing type	DE ball bearing	NDE bearing type	NDE ball bearing
DE bearing	6309	NDE bearing	6210
Code Type de graissage	Graisseurs		

Motor electrical interface

Connection network type	Cast iron ADF terminal box	Cable type	-
Connection network material	Cast iron	Cable gland material	Cable gland not supplied, holes tapped plugs
Connection network position	A	Main cable gland type	1xM40 + 1xM20 ; With plugs
Connection network orientation	up	Principal cable gland position	Right (1)
Connection network relative position	0		



N° :

Date : 7 sept. 2017

Induction motor - 2P FLSD 160MB 15kW LS2/IE2 Ex II2G Ex d IIB T4 Gb 400VD/690VY 50Hz B3 -

Motor options

Vibration level	A (35µm ; 2.2mm/s ; 3.5m/s ²)	Cover	Metal cover
Balancing type	Half-key (H)	Drip proof cover option	-
Impregnation type	< 95% ; -16+40°C (T)	cooling type	-
Winding thermal protection	1xPTC (winding)	Forced ventilation characteristics	-
Space heater	-	Encoder type	-
Draining plugs position	-	Encoder characteristics	-
Nameplate material	Stainless steel nameplate	Screw material	Steel screw
Endshield thermal protection	-	Adaptation for vibration sensor	-
Reinforced winding insulation	-		

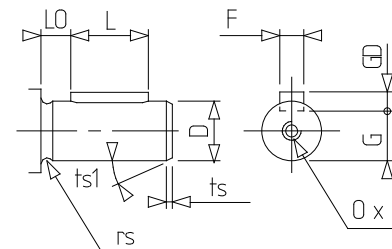
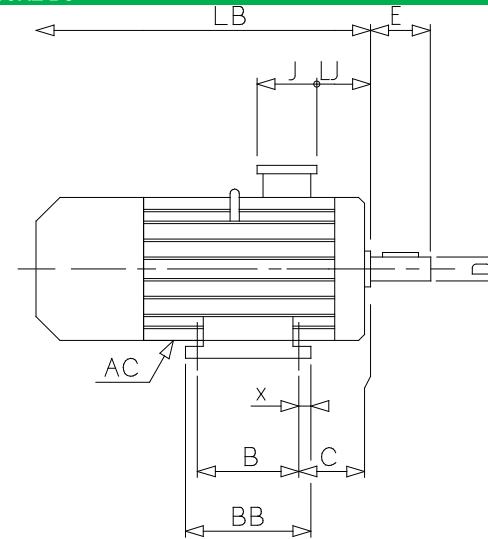
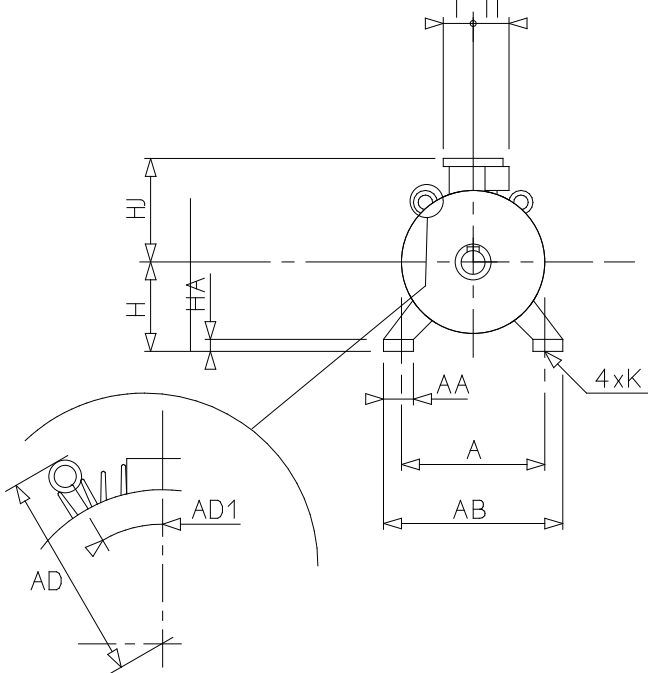
Motor characteristics (on mains supply)

Rated speed (min-1)	2937	Unload maximum starting frequency (d/h)	-
Rated current (A)	27.0	Acoustic pressure level (dB(A))	70
No-load current (A)	-	Power factor at 4/4 of the load	0,87
Id / In	7.11	Power factor at 3/4 of the load	0,83
Rated torque (N.m)	49	Power factor at 2/4 of the load	0,74
Starting torque (N.m)	132.0	Efficiency at 4/4 (IEC 60 034-2-1) of the load (%)	90.90
Maximum torque (N.m)	157	Efficiency at 3/4 (IEC 60 034-2-1) of the load (%)	91.70
Average starting torque (N.m)		Efficiency at 2/4 (IEC 60 034-2-1) of the load (%)	91.40
Rotor locked time (cold) (s)			

N° :

Date : 7 sept. 2017

Induction motor - 2P FLSD 160MB 15kW LS2/IE2 Ex II2G Ex d IIB T4 Gb 400VD/690VY 50Hz B3 -



A	254
AA	70
AB	300
AC	309.00
AD1	40
B	210
BB	295
C	108.0
D	42k6
E	110
F	12
G	37
GD	8
H	160
HA	22
HJ	321.0
I	134
II	145
J	242
K	14.5 H 14
L	90
LB	599.0
LJ	30.0
LO	20
O	M16
p	36
rs	0.8
ts	1
ts1	45
x	20