



N° :

Date : 24 janv. 2018

Induction motor with options

6P FLSD 132M 4kW LS2/IE2 Ex II2G Ex d IIB T4 Gb B3 230VD/400VY 50Hz -

1xPTC (winding) ;

Utilisation : Environment ATEX standard - Gas ; Ambiance Corrosive ; Finition - ; Zone Explosion Proof - Gas ; Type of protection Ex II2G Ex d IIB T4 Gb ; General applications ; Ambient temperature -20 +40 °C ; Maximum altitude 1000 m ; Maximum surface temperature 135°C

Motor characteristics : Cast iron housing ; Cast iron DE endshield ; Cast iron NDE endshield.



Motor definition

Motor definition		Application	General applications
Protection type	Ex II2G Ex d IIB T4 Gb	Main voltage (V)	400
Generation code	LS2	Connection	DY
Efficiency class	IE2	Motor winding (V)	230VD/400VY
Number of network phases	3	Rated Frequency (Hz)	50
Number of speed		Operation position	IM1001(IMB3)
Polarity	6P	Index of protection	IP55
Motor serie	FLSD	Index of cooling	IC411
Frame size (mm)	132	Insulation class	F
Length code	M	Finish	-
HS rated power (kW)	4.000	Moment of inertia J (kg.m ²)	0.0270000
LS rated power (kW)	-	Motor weight (kg)	92.0
Rated speed (min-1)	965		
Maximum mechanical speed (min-1)			

Common definitions

Paint shade	RAL2004
Paint system	C3_IIa (1 epoxy base coat 30/40 microns + 1 polyurethane finish coat 20/30 microns)

Motor mechanical interface

Mounting flange	-	Shaft material type	Steel shaft
Drive end shaft type	IEC STANDARD shaft end	Nuance of shaft material	-
Diameter DE shaft (mm)	38k6	Second shaft extension	-
Length DE shaft (mm)	80	Diameter NDE shaft (mm)	-
DE bearing mounting	Locked	Second shaft end length (mm)	-
DE bearing type	DE ball bearing	NDE bearing type	NDE ball bearing
DE bearing	6308	NDE bearing	6308
Code Type de graissage	Vie		

Motor electrical interface

Connection network type	Cast iron ADF terminal box	Cable type	-
Connection network material	Cast iron	Cable gland material	Cable gland not supplied, holes tapped plugs
Connection network position	A	Main cable gland type	1xM25 + 1xM20 ; With plugs
Connection network orientation	up	Principal cable gland position	Right (1)
Connection network relative position	0		

N° :

Date : 24 janv. 2018

Induction motor with options - 6P FLSD 132M 4kW LS2/IE2 Ex II2G Ex d IIB T4 Gb B3 230VD/400VY 50Hz -

Motor options

Vibration level	A (25µm ; 1.6mm/s ; 2.5m/s ²)	Cover	Metal cover
Balancing type	Half-key (H)	Drip proof cover option	-
Impregnation type	< 95% ; -16+40°C (T)	cooling type	-
Winding thermal protection	1xPTC (winding)	Forced ventilation characteristics	-
Space heater	-	Encoder type	-
Draining plugs position	-	Encoder characteristics	-
Nameplate material	Aluminium nameplate	Screw material	Steel screw
Endshield thermal protection	-	Adaptation for vibration sensor	-
Reinforced winding insulation	-		

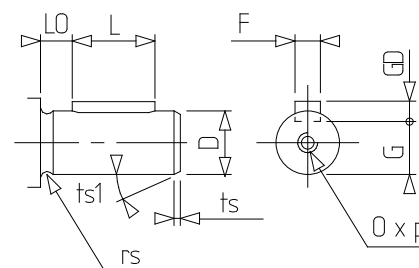
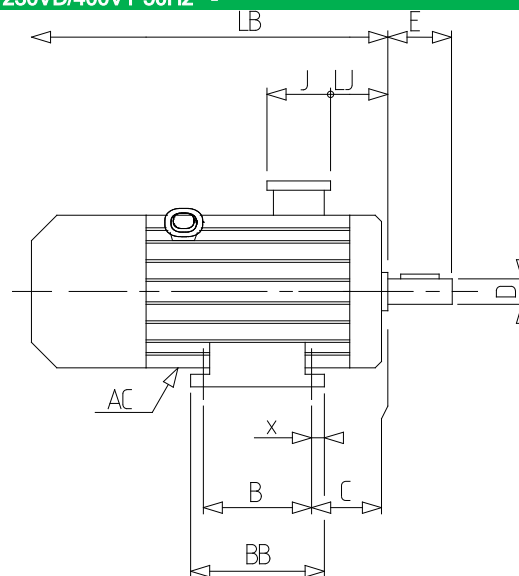
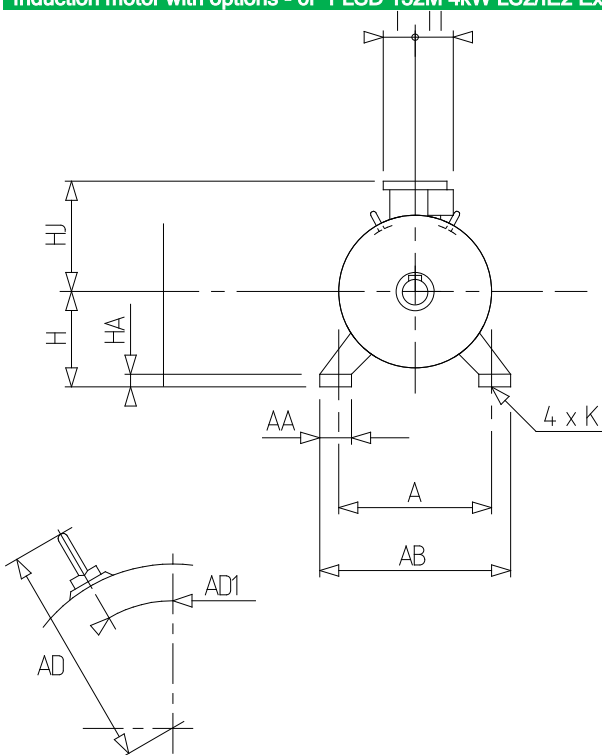
Motor characteristics (on mains supply)

Rated speed (min-1)	965	Unload maximum starting frequency (d/h)	-
Rated current (A)	8.9	Acoustic pressure level (dB(A))	55
No-load current (A)	-	Power factor at 4/4 of the load	0,76
Id / In	5.28	Power factor at 3/4 of the load	0,7
Rated torque (N.m)	40	Power factor at 2/4 of the load	0,58
Starting torque (N.m)	80.0	Efficiency at 4/4 (IEC 60 034-2-1) of the load (%)	85.30
Maximum torque (N.m)	99	Efficiency at 3/4 (IEC 60 034-2-1) of the load (%)	86.50
Average starting torque (N.m)		Efficiency at 2/4 (IEC 60 034-2-1) of the load (%)	85.60
Rotor locked time (cold) (s)			

N° :

Date : 24 janv. 2018

Induction motor with options - 6P FLSD 132M 4kW LS2/IE2 Ex II2G Ex d IIB T4 Gb B3 230VD/400VY 50Hz -



A	216
AA	63
AB	255
AC	264.00
AD1	30
B	178
BB	243
C	89.0
D	38k6
E	80
F	10
G	33
GD	8
H	132
HA	16
HJ	239.0
I	80
II	77
J	142
K	12 H14
L	63
LB	462.0
LJ	56.0
LO	10
O	M12
p	28
rs	0.5
ts	2
ts1	20
x	14